

maeg

CENTER GUIDO

BUILDINGS AND SPECIAL STRUCTURES

- **HOSPITALITY AND OFFICES**

GUIDO CENTER

Location

Libreville, Gabon

Client

Groupement Santullo Sericom Gabon S.A.

Scope of work

Design, fabrication and installation of steel structures

Period of execution

2012-2014

Weight

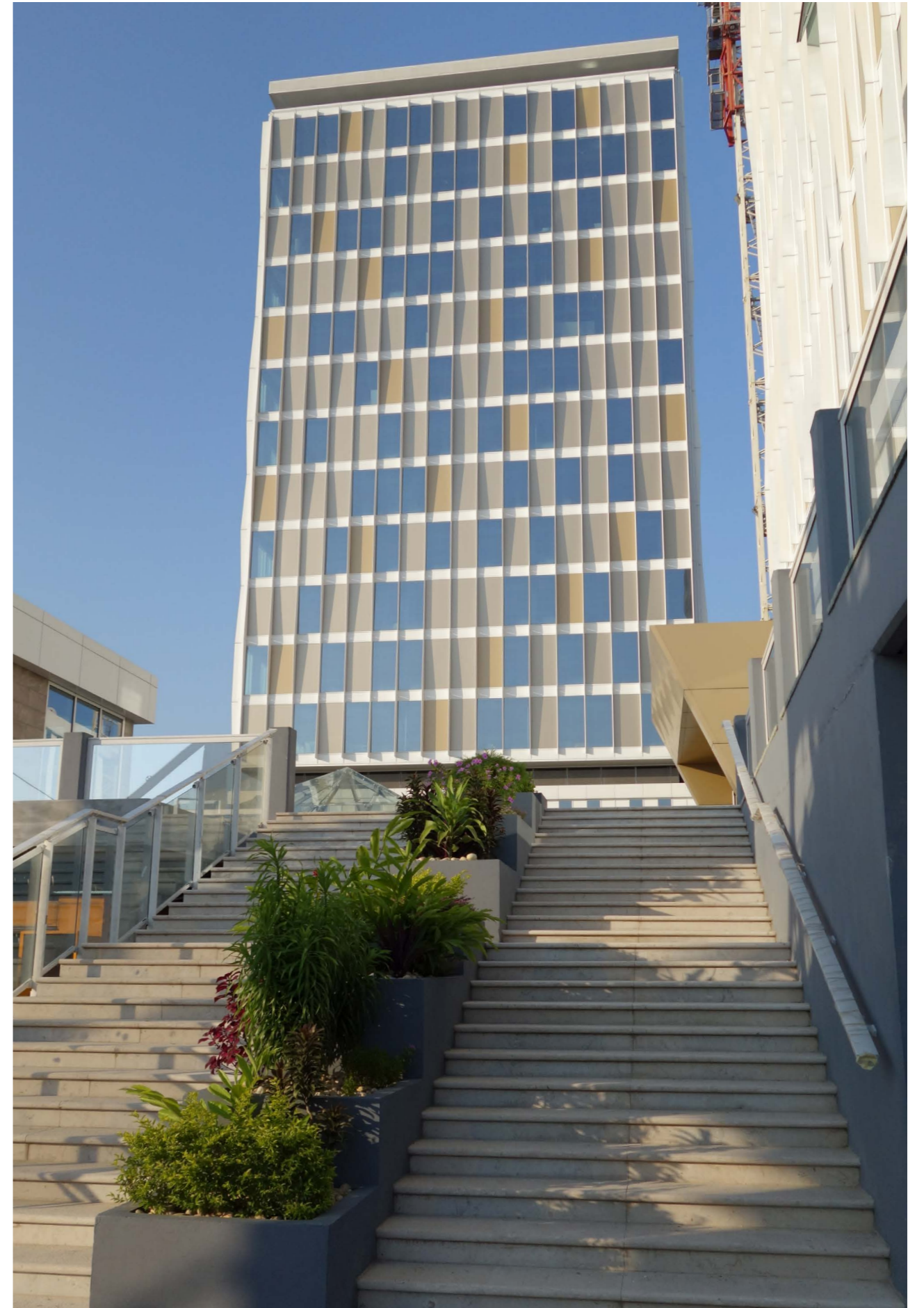
1.750 tons

The Guido Centre is a “L” shaped mix-use building erected in the northern part of Libreville, capital of Gabon. Built near the prestigious area of Boulevard Triumphal, main artery of the city hosting several ministries and bank offices, it is destined to become a new landmark of the city.

The Guido Center has a total surface of 6.600 square meters. It is composed of an underground parking lot upon which it is built a two-floors L-shaped block, hosting commercial spaces, with on top two towers, one at each extremity. The commercial north tower is composed of 12 floors with a height of 58.2 meters, while the south residential tower has 10 floors with a height of 50.7 meters and a square plant measuring 28 meters per side. A paved square with green areas completes the building. Altogether, 1.769 tons of steel structures

support the external façade, characterized by a regular grid alternating opaque and glazed modules that integrates with the surrounding reducing the environmental impact.









Ideas
shape
the
World

Maeg Costruzioni S.p.A.
Via Toniolo 40
31028, Vazzola (TV) - Italy
+39 0438 441558
www.maegspa.com